

Charlotte

JULY / AUGUST 2023

# HOME

DESIGN & DECOR®

THE  
**Kitchen+Bath**  
ISSUE

*PLUS:*  
NUMBER ONE  
STUNNER

SPANISH  
EXPANSION

# NUMBER ONE STUNNER

THESE STUNNING PICKS FOR YOUR KITCHEN AND BATH ARE CERTAIN TO TAKE YOUR STRICTLY FUNCTIONAL ROOMS TO STRICTLY GORGEOUS.

PRODUCED BY ANNE MARIE ASHLEY







DESIGNER  
FAVE

**Top:** Malayer Rug /  
elikorugsbydavidariel.com  
**Right:** Jean-Michel  
Basquiat Samo Skull /  
ruggable.com  
**Bottom:** Summer Solstice  
Vintage Runner /  
houseofnomaddesign.com



FOUR STORY INTERIORS



**Above Left:** Hand-Knotted Moroccan  
Runner / charlotteruggallery.com  
**Above Right:** Irregular Dots Runner /  
luluandgeorgia.com



# RUNAWAY

SOMETIMES THE LEAST EXPECTED  
DETAIL PACKS THE MOST  
UNEXPECTED PUNCH.



**Right:** Vintage Runner / crazyfurrugs.com  
**Middle:** Hand-Knotted Runner / charlotteruggallery.com  
**Bottom:** Joelle Runner / luluandgeorgia.com



**Left:** Morris & Co.  
Pimpernel Runner /  
ruggable.com





**Right:** Curate Barstool / centuryfurniture.com



**Left:** Luna Barstool / houseofnomaddesign.com  
**Bottom:** Wyndham Swivel / Arteriors.com



**Above:** Villa & House Barstool / bungelow5.com  
**Below:** Centro Counter Stool / houseofnomad design.com



HOUSE OF NOMAD



# BAR NONE

THE MOST INVITING SEAT IN THE HOUSE IS AT THE CENTER OF HOSPITALITY.

**Top:** Sunpan Carter Bar & Counter Stool / sunpan.com

**Right:** Linville Falls Counter Stool / hookerfurniture.com



**Right:** Furniture Classics Counter Stool / perigold.com



**Left:** Regan Barstool / globalviews.com





MARKET



Above: Unlacquered Brass and Bone Handles / [cb2.com](http://cb2.com)



HEATHER WOLFF INTERIORS



Above: Moen Tenon Faucet / [ferguson.com](http://ferguson.com)



Left: Sea Glass Knob / [hooksandknobs.com](http://hooksandknobs.com)



Above: Ruelle Knob in Matte Black or Brass / [cb2.com](http://cb2.com)



Above: Honeycomb Pull / [designtheoryhw.com](http://designtheoryhw.com)

# EASY-WARE

WHEN CREATING THE JEWEL BOX OF THE HOME, DON'T FORGET THE JEWELRY.



Above: Swan Towel Ring / [anthropologie.com](http://anthropologie.com)  
Right: Wrapped Leather Knob / [cb2.com](http://cb2.com)



Above: Edgewood Pull / [modernmatter.com](http://modernmatter.com)

Left: Reed Custom Knob / [modernmatter.com](http://modernmatter.com)

Right: Kohler Purist Faucet in Matte Black / [themajesticbath.com](http://themajesticbath.com)





**Right:** Superiore Range Hood in Matte Brown / [superiore.us](http://superiore.us)  
**Lower Right:** Smeg Chimney Hood in Majolica / [smeg.com](http://smeg.com)



**Top Right:** Walnut Hood with Brass Accents / [hoodsly.com](http://hoodsly.com)  
**Above:** Ilve Majestic Hood in Blue Grey / [ilveusa.com](http://ilveusa.com)



CAREN BISTANEY DESIGN



**Below:** Custom Brass Barrel Half Round Range Hood / [riversidesheetmetal.com](http://riversidesheetmetal.com)



# HOOD WINK

BRING SOME FOCUS INTO THE HEART OF THE HOME.

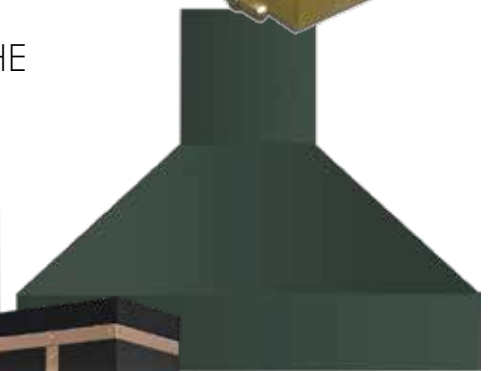


DESIGNER  
FAVE

**Top Left:** Midnight Range Hood / [futurofuturo.com](http://futurofuturo.com)  
**Bottom Left:** Custom Paster Hood / Design by Studio McGee



**Above:** Quintana Range Hood / [thompsontraders.com](http://thompsontraders.com)



**Above:** Viking 5 Series Range Hood in Forrest Green / [viking.com](http://viking.com)  
**Left:** Artisan AT10 Custom Range Hood / [worldcoppersmith.com](http://worldcoppersmith.com)





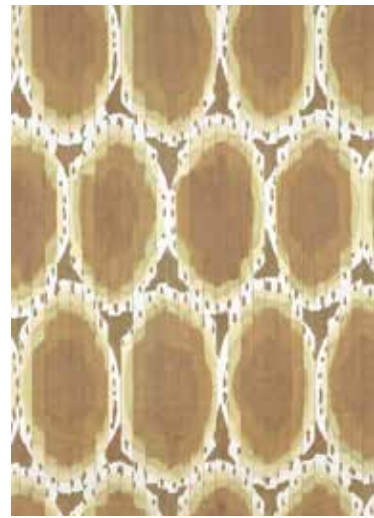
MARKET



**Top:** Red Coat / annikareed.com  
**Bottom:** Colorante in Midnight / clarke-clarke.sandersondesigngroup.com



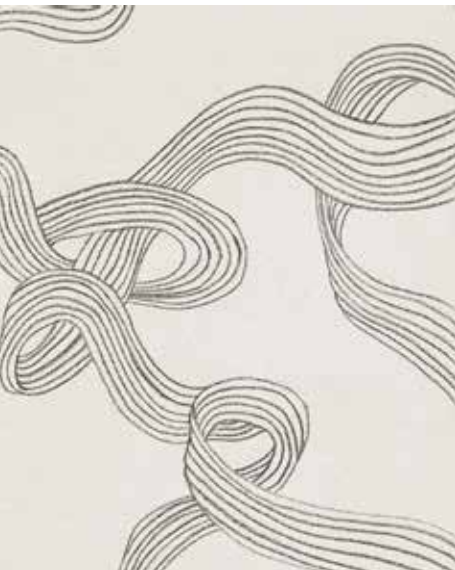
CAROLINE BRACKETT DESIGN



**Top:** Atoll / pierrefrey.com  
**Bottom:** Good Fortune / ferrickmason.com

# WALLED IN

WHILE PAINT CAN BE HANDY,  
 WALLPAPER CERTAINLY IS DANDY.



**Above:** Stripes / rebelwalls.com



**Right:** Bloomfield / houseofharris.com  
**Below:** Opulence in Pink Marble / rebelwalls.com

**Left:** London Metro Lines / livetteswallpaper.com

